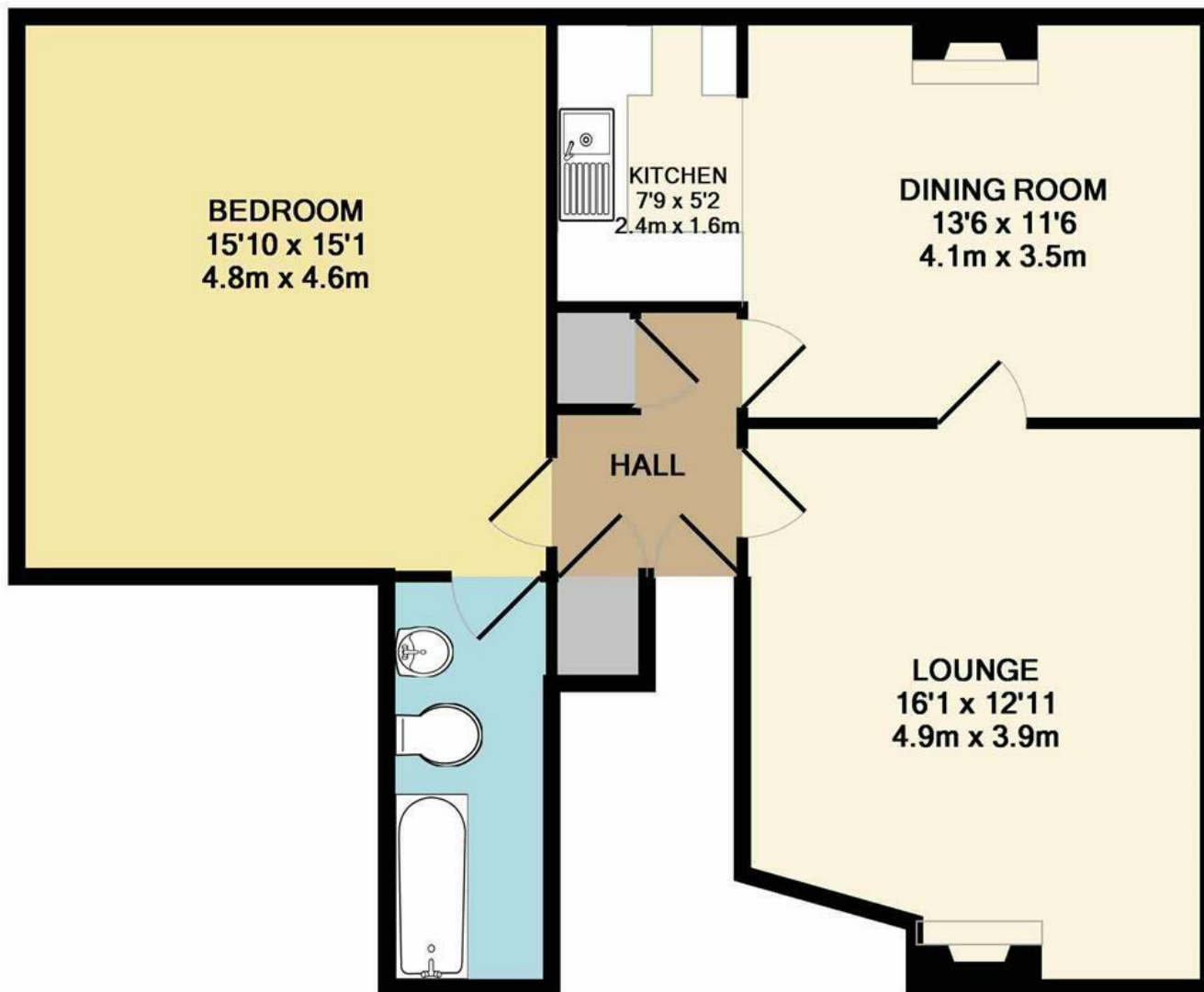




Upper St. Giles Street | Norwich | NR2  
 PCM £825 PCM

abbotFox



Energy Efficiency Rating		
	Current	Potential
Very energy efficient - lower running costs		
(92 plus) <b>A</b>		
(81-91) <b>B</b>		
(69-80) <b>C</b>		
(55-68) <b>D</b>		
(39-54) <b>E</b>		
(21-38) <b>F</b>		
(1-20) <b>G</b>		
Not energy efficient - higher running costs		
<b>England &amp; Wales</b>	EU Directive 2002/91/EC	

Disclaimer – In accordance with the Property Misdescriptions Act, the company gives notice that all descriptions, references to condition, necessary permissions for use and other details are given in good faith and believed to be correct, but any intending lessees do not rely on them as statements of fact, but must satisfy themselves by inspection or other means, as to their accuracy.

TOTAL APPROX. FLOOR AREA 735 SQ.FT. (68.2 SQ.M.)

Whilst every attempt has been made to ensure the accuracy of the floor plan contained here, measurements of doors, windows, rooms and any other items are approximate and no responsibility is taken for any error, omission, or mis-statement. This plan is for illustrative purposes only and should be used as such by any prospective purchaser. The services, systems and appliances shown have not been tested and no guarantee as to their operability or efficiency can be given  
 Made with Metropix ©2017



Located on the popular Upper St Giles Street is this first floor apartment. Accommodation features lounge, separate spacious dining room which is open plan to kitchen, 15'10 x 15'1 bedroom and generous three piece bathroom. Early viewings are recommended to avoid disappointment.

The city centre of Norwich boasts two modern shopping malls, a bustling market place and boutique shopping in the numerous lanes and cobbled streets with the two magnificent cathedrals and dominant castle providing a wealth of history dating back to the Norman times.

